

Precision Machining "Plus"

What's the Plus? It's our combination of processes, experience and engineering that results in superior components for your customers.

We work with machine shops and manufacturers - not compete with them. We help you achieve results that you may not have thought possible using standard machining processes. We improve components using innovative design, materials and process.

- MIM Parts (metal injection molding)
- Precision CNC Machining, Surface Grinding
- High Vacuum Clean Heat Treating and Environmental Testing
- Assembly - including Microscopic
- Hardening with Plasma Coatings of Ceramics and Other Materials
- Value Added Engineering
- Expert Consulting Services for Jig Design and Improving Life of Wear Parts
- Expert Value Added Engineering to Help Improve Your Parts



Parts and components that:

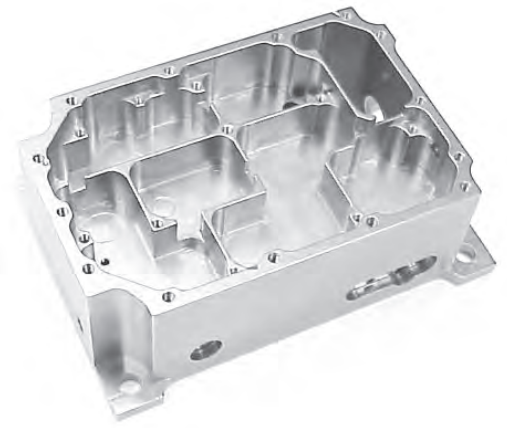
- **cost less**
- **last longer**
- **are easier to maintain**
- **work better**

We can engineer custom solutions for you. Call or email us to find out more.



SOME OF OUR CUSTOMERS

- L3 Communications
- PA Turnpike Commission
- New York City Transit Authority
- Chicago Transit Authority
- Cubic Transportation Systems
- Transcore
- Magtek
- Kulicke and Soffa



APPLICATIONS OF IMPROVED RELIABILITY AND WEAR LIFE

- Coin changers
- Card and ticket dispensing mechanisms
- Credit card swipe readers
- Bezels and plates for high traffic machinery
- Textile equipment
- Medical and dental devices
- Firearm parts
- Automotive parts
- Computer peripherals
- Semiconductor production equipment
- Consumer products
- Electronic packaging
- Custom parts for manufacturing equipment



brush
INDUSTRIES®

Precision Machine Shop Services

Brush Industries® | 301 Reagan Street, P.O. Box 638, Sunbury, PA 17801 USA
Tel 800-233-0362 | Tel 570-286-5611 | Fax 570-286-2649

www.brushindustries.com

info@brushindustries.com



Equipment List

CNC Vertical Machining Centers

2 Matsuura MC-500V with 20 tool ATC

- Indexer - Tsudakoma Circular Table
- Palletized
- Y axis 14" (360mm)
- X axis 20" (510mm)
- Z axis 18" (460mm)

2 Matsuura MC-510V with 20 tool ATC

- Palletized
- Y axis 14" (360mm)
- X axis 20" (510mm)
- Z axis 18" (460mm)

CNC Turning

1 Pratt & Whitney

- SMW Air Chuck 6.5" (165mm) Diameter
- Swing (bed) 11.8" (299mm) Diameter
(cross slide) 8" (203mm) Diameter
- X axis (cross slide) 10"
- Y axis (spindle) 11.8"
- Spindle through hole 1.18" (30mm) Diameter
- Bore length 4.375"

Manual Lathes

- 1 Schaublin Manual Lathe
- 1 Hardinge Manual Lathe swing 6" c/s,
10" bed, 20" C to C
- 1 Victor Manual Lathe swing 14" c/s,
40" C to C

CNC Grinding

- 2 Boyer-Schultz 6" x 18"

Milling

- 2 SuperMax Vertical Mills - autofeed
- 1 Luthy Vertical Mill
- 1 Ram/Morey Vertical/Horizontal Mill - autofeed
- 1 Billeter Vertical Mill
- 1 Barker double Spindle Mill
- 1 Bridgeport Vertical Mill - autofeed

Molding

- Arburg 270V Injection Molding Press

Grinding

- Okamoto (12" X 24") CNC Precision Profile Surface Grinder
- 1 Mipsa Cylindrical Grinder - autofeed 10" swing,
17" C to C
- 4 Brown and Sharp Grinders - 618 Micromasters
- 1 Chevalier Surface FSG-1224AD - autofeed

Lapping

- 1 Kemit Lap
- 1 Crane Face Lap
- 1 Hoffman 66T Double Face Lap
- 1 Hoffman 32T Double Face Lap
- 2 Crane Lapmasters

Plasma Coating

- Metco 7-M Plasma Coating System

Coil Winding

- 2 Tanac AX3 - Computer Controlled

Support Equipment

- SIP Jig Bore
- Sunnen Hone
- Vapor Hone
- Crest Ultrasonic Aqueous Cleaning System
- Varian Wafering Machines
- Vibra-Sheen, Turbula and Sweco Tumblers
- Sandblasters
- Thomas Tap Disintegrate
- 2 Denison Model A Multi Presses
- Pasadena Heated Platen Press
- Jaespa and DO-ALL Bandsaws
- AutoCAD
- Master Cam
- Baty Gage Master Optical Comparitors
- OGP Smartscope / Visual Inspection Machine
- Environmental Chamber
- Rockwell Hardness Tester

Heat Treating and Environmental Testing

- Blue M Industrial Ovens
- High Vacuum Furnace with Molybdenum Chamber
- Tenney Environmental Testing Chamber
(Temperature and Humidity Testing) 14 Cubic Foot Workspace

brush
INDUSTRIES®

Precision Machine Shop Services

Brush Industries® | 301 Reagan Street, P.O. Box 638, Sunbury, PA 17801 USA
Tel 800-233-0362 | Tel 570-286-5611 | Fax 570-286-2649

www.brushindustries.com

info@brushindustries.com

**We can engineer custom solutions for you.
Call or email us to find out more.**

